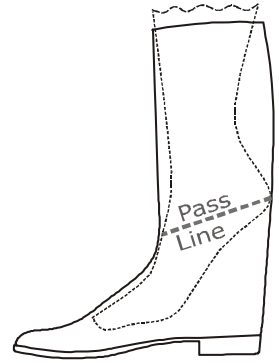


pass line – this line represents the position (- the angle and dimension) where the foot has the greatest constriction when it is inserted into a boot with no **exit**: on the foot it is the line and dimension of the **long-heel** measure.

(In a boot with no **exit**, the pass-line MUST NOT be less than the **long-heel** measure: the pass line dimension is critical when the standard pattern is being developed.)



patent leather - a leather which has an extremely shiny surface: at one time the surface finish was always linseed oil based, today however it is usually a plastic coating, e.g. polyurethane.

patten - a wooden overshoe, no longer in use: in fact it is more correctly described as a wooden under-sole, lightly attached to the normal shoe, to protect the latter from the wet and dirt.

pattern – and 'upper pattern': **1.** the 2D (2-dimensional) shape of a shoe upper or bottom component that will be produced from a sheet material: - **2.** the collective term for all the upper component patterns, e.g. on a mans shoe the cap, vamp, quarters, tongue, and linings etc..

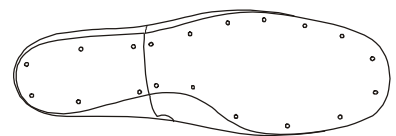
pattern binding – **1.** the brass strip around the edge of a pattern used for hand cutting: - **2.** the process of applying the binding.

pattern board - a fibreboard, normally 2 mm thick, especially suitable for hand-cutting patterns. See also **binding - 2.**

pattern cutting - the process of producing the patterns for a new **model-size** shoe. Sometimes the phrase refers specifically to the process of producing the patterns for the upper components.

pattern grading - referred to under **grading**; the process of generating the patterns (see **pattern cutting**) for all the sizes in which a shoe will be made, from the **model-size** patterns.

pattern, last bottom - the 2D shape of the bottom of the last (illustrated), from which other patterns will be derived, such as those for the insole and sole.



pattern making - the process of binding the edges of patterns made from **pattern board**, with brass strip, and embossing the size/fitting and design/shoe identify information on them, prior to their being used by a hand clicker (see **clicking**).

pearlised - a leather finish that has a sheen or lustre similar to that of a pearl.

peening – used for the process of adding a size (notch) code to the edge of a press-knife (Northamptonshire, UK)

peep-toe - a style of upper in which the toe is open: thus all or some of the toes are visible.

